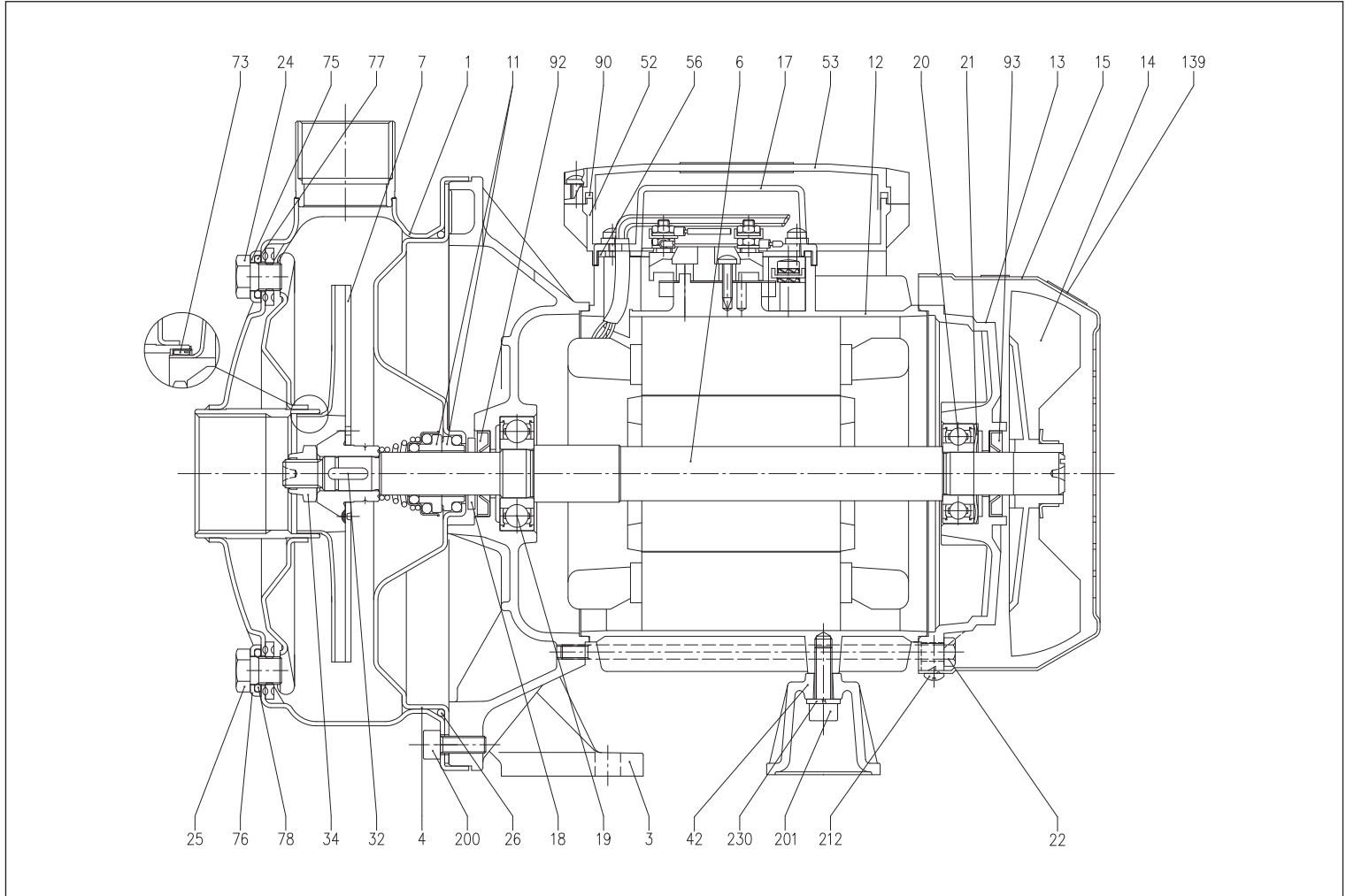


SINGLE IMPELLER CENTRIFUGAL ELECTRIC PUMPS

in AISI 304

SECTIONAL VIEW



MATERIALS TABLE

Ref.	Name	Materials	Ref.	Name	Materials
1	Pump casing	EN 1.4301 (AISI 304)	25	Plug	AISI 303
3	Motor bracket	Aluminium	26	O-Ring [3]	NBR
4	Casing cover	EN 1.4301 (AISI 304)	32	Key	AISI 316
6	Shaft	AISI 303 Part in contact with the liquid	34	Impeller nut	EN 1.4301 (AISI 304)
7	Impeller	EN 1.4301 (AISI 304)	42	Motor support	Aluminium
11	Mechanical seal [3]	Ceramic/Carbon/NBR	52	Terminal box [2]	ABS
12	Motor frame	-	53	Terminal box cover [2]	ABS
13	Motor cover	Aluminium	56	Terminal box cover gasket	NBR
14	Fan	PA	73	Casing ring [4]	EN 1.4301 (AISI 304)
15	Fan cover	Galvanised Fe P04	75	Washer	EN 1.4301 (AISI 304)
16	Terminal box	-	76	Washer	EN 1.4301 (AISI 304)
17	Terminal box cover [1]	Aluminium	77	O-Ring [3]	NBR
18	Splash ring	NBR	78	O-Ring [3]	NBR
19	Bearing (pump side)	-	90	Gasket [2]	NBR
20	Bearing (motor side)	-	92	Seal ring	-
21	Adjusting ring	Steel C70	93	Seal ring	-
22	Tie-rod	Galvanised Fe 42	110	Motorprotector [2]	-
23	Capacitor [2]	-	200	Screw (pump body)	Stainless steel A2 UNI7323
24	Plug	AISI 303			

[1]= Three phase only [2]= Single phase only
 [3]= FPM for CDXH, CDXHS, CDXHW, CDXHSW, EPDM for CDE
 [4]= NBR for CDX 70/05, 70/07, 90/10, FPM for CDX H-HS-HW-HSW 70/05, 70/07, 90/10